

— CEVA? ANAHTARI —

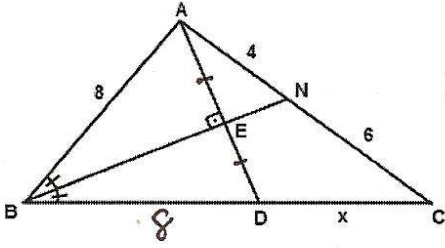
2007-2008 EĞİTİM-ÖĞRETİM YILI AYDIN ATATÜRK ANADOLU LİSESİ  
10/F SINIFI GEOMETRİ DERSİ 2.DÖNEM 1. YAZILI SINAVI SORULARI

ADI-SOYADI:

NO:

ALDIĞI NÖT:

1.



ABC üçgeninde [BN] açıortay

$|CD|=x=?$

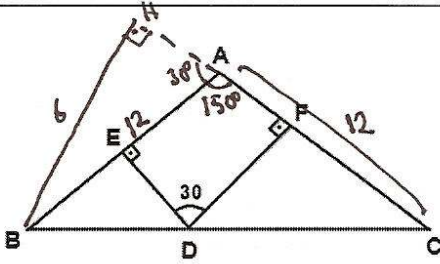
$$\frac{4}{6} = \frac{8}{8+x}$$

$$32+4x=48$$

$$4x=16$$

$$x=4$$

2.

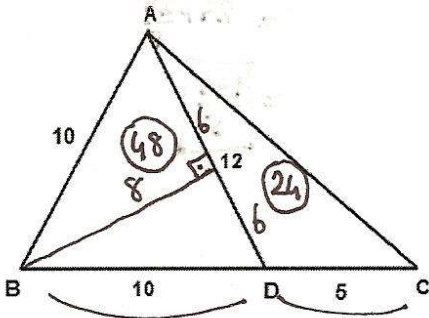


$|AB|=|AC|$

$|DE|+|DF|=6 \text{ cm.}$

$$A(ABC)=? \quad \frac{12 \cdot 6}{2} = 36 \text{ cm}^2$$

3.



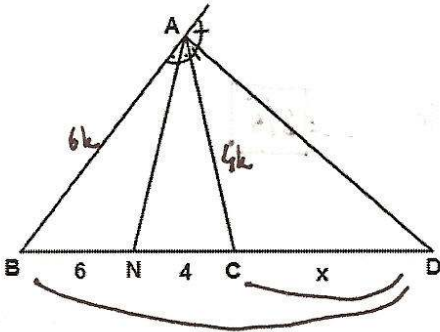
Şekilde verilenlere göre,

$A(ABC)=?$

$$A(ABD) = \frac{12 \cdot 8}{2} = 48$$

$$A(ABC) = 48 + 24 = 72$$

4.



[AN] iç açıortay

[AD] dış açıortay

$|CD|=x=?$

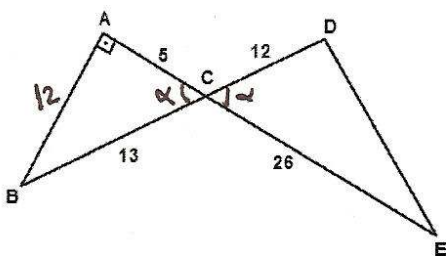
$$\frac{4}{6} = \frac{x}{x+10}$$

$$4x+40=6x$$

$$40=2x$$

$$x=20$$

5.



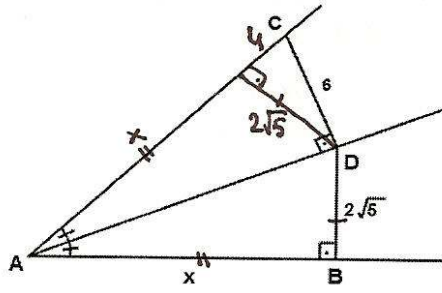
Şekilde verilenlere göre,

$$A(CDE)=? \quad \frac{1}{2} \cdot 12 \cdot 26 \cdot \sin \alpha = \frac{1}{2} \cdot 12 \cdot 26 \cdot \frac{12}{13}$$

$$\sin \alpha = \frac{12}{13}$$

$$= 144$$

6.



[AD] (BAC) nin açıortayı

|CD|=6

$(2\sqrt{5})^2 = x \cdot 4$

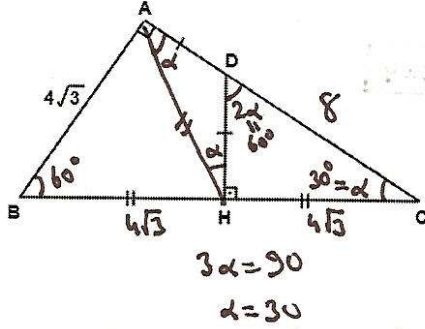
|BD|=2√5

20 = 4x

|AB|=x=?

$\boxed{5 = x}$

7.

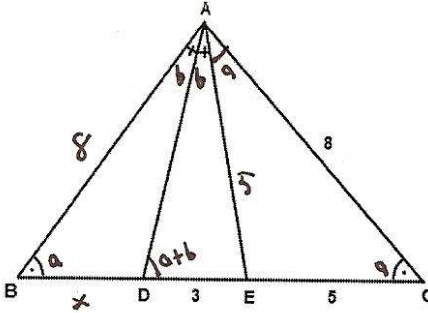


|AD|=|DH|

|BH|=|HC|

|DC|=?  $\boxed{8}$

8.



ABC üçgen

[AD] açıortay

m(ABC)=m(ACB)

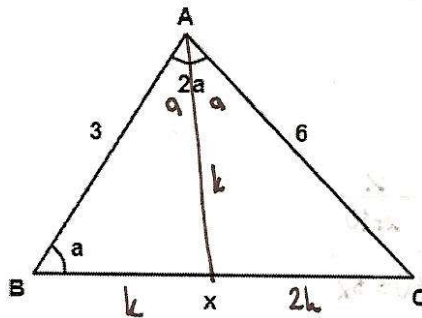
olduğuna göre,

ABC üçgeninin çevresini bulunuz.

$\frac{5}{8} = \frac{3}{x}$   
 $x = \frac{24}{5}$

$\zeta(ABC) = 8 + 8 + 8 + \frac{24}{5}$   
 $= 24 + \frac{24}{5}$   
 $= \boxed{\frac{144}{5}}$

9.



ABC üçgeninde verilenlere göre,

|BC|=x?

$k^2 = 3 \cdot 6 - 2k \cdot k$

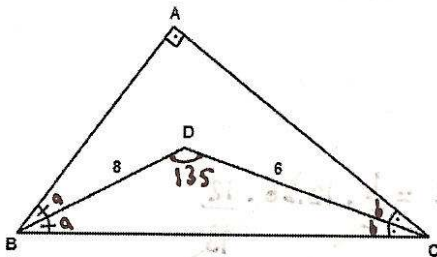
$k^2 = 18 - 2k^2$

|BC|=3k =  $\boxed{3\sqrt{6}}$

$3k^2 = 18$

$k^2 = 6$   $k = \sqrt{6}$

10.



[BD] ve [CD] açıortay

A(BDC)=? =  $\frac{1}{2} \cdot 8 \cdot 6 \cdot \sin 135$

=  $\frac{1}{2} \cdot 8 \cdot 6 \cdot \sin 45$

=  $\frac{1}{2} \cdot 8 \cdot 6 \cdot \frac{\sqrt{2}}{2}$

=  $\boxed{12\sqrt{2}}$

$2a + 2b = 90$

$a + b = 45$

Not: Sınav süresi 45 dakika, her sorunun doğru cevabı 10 puandır. Başarılar dilerim.